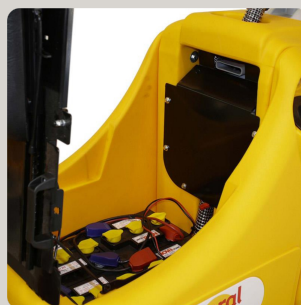


coral 70s



Theoretical working capacity: 3500 m²/h

A 24V ride-on machine with cylindrical brushes and a working width of 70 cm.



TECHNICAL DATA



Ride-on machine with traction



Power supply 24V/240Ah



Cleaning width 700mm



Brushes pressure adjustable - - -



Battery autonomy 3,5-4,5h



Solution tank / recovery tank 100/105l



Cylindrical brushes 2x150mm



Brushes speed 785rpm

- Squeegee width: 1000 mm
- Brushes motor: 2x600 Watt
- Motion system: automatic
- Maximum gradient: 10%
- Suction motor: 800 Watt
- Suction vacuum: 160 mbar
- Machine dimensions: L: 1575 mm
W: 780 mm
H: 1320 mm
- Machine weight w/o battery: 262 kg
- Traction motor: 500 Watt
- Movement speed: 5 km/h
- Battery compartment: L: 520 mm
W: 415 mm
H: 385 mm
- Class: III
- Protection level: IP 23
- Loudness: <70 dB (A)

A ride-on sweeper machine with a cleaning width of 70 cm. Two cylindrical brushes clean and collect the dirt in a recovery box that drains the exceeding water then collected by the squeegee. The "brush dry" system avoids the leaking at the end of the work. Every model features the "automatic" mode that runs all the machine functions and also the "break washing" mode which optimizes the end of the cleaning with a proper automatic shutdown sequence. The operator is able to work using only one button. Also the pressure that the brushes apply on the floor is adjustable on different levels independently from the brushes wearing. The Coral model is suitable for every fast cleaning situation and for floors with large joints.